



GPL 672

6V 7.2Ah

GPL 672 is a general purpose battery up to 10 years in standby service or more than 260 cycles at 100% discharge in cycle service. As with all CSB batteries, all are rechargeable, highly efficient, leak proof and maintenance free.



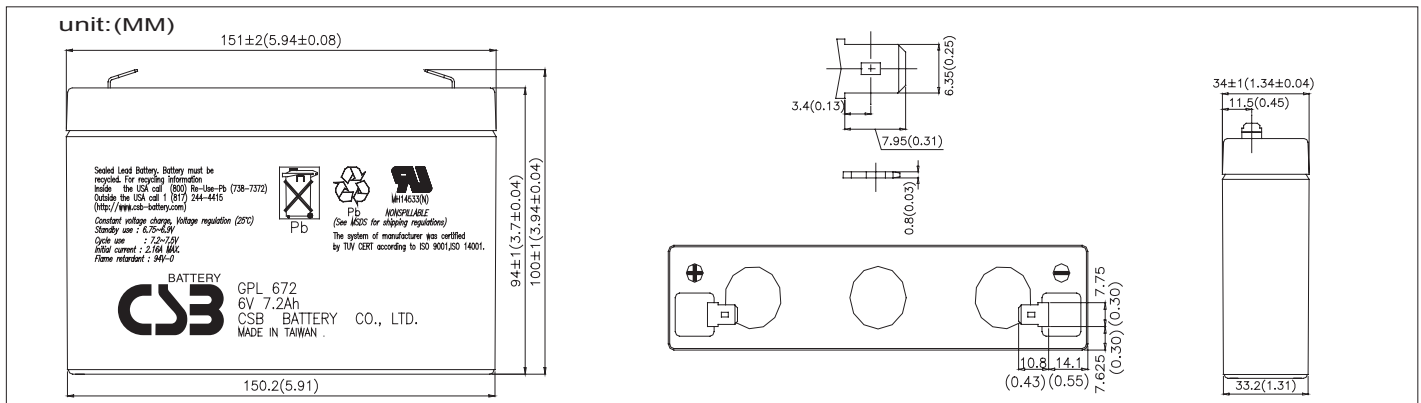
Specification

Cells Per Unit	3
Voltage Per Unit	6
Capacity	7.2Ah @ 20hr-rate to 1.75V per cell @25 °C (77°F)
Weight	Approx. 1.37 kg(3.02 lbs)
Maximum Discharge Current	100A/130A(5sec)
Internal Resistance	Approx. 13.5 mΩ
Operating Temperature Range	Discharge: -15°C~50°C (5°F~122°F) Charge: -15 °C~40°C (5°F~104°F) Storage: -15°C~40°C (5°F~104°F)
Nominal Operating Temperature Range	25°C±3°C(77°F±5°F)
Float Charging Voltage	3.5 to 15.0 VDC/unit Average at 25°C (77°F)
Recommended Maximum Charging Current Limit	2.16A
Equalization and Cycle Service	14.4 to 15.0 VDC/unit Average at 25°C (77°F)
Self Discharge	CSB Batteries can be stored for more than 6 months at 25°C (77°F). Please charge batteries before using. For higher temperatures the time interval will be shorter.
Terminal	F1/F2-Faston Tab187/250
Container Material	ABS(UL 94-HB/File E50263)*Flammability resistance of (UL 94-V0/File E88637) can be available upon request.



CSB-manufactured batteries are UL-recognized components under UL924 and UL1989. CSB is also certified by ISO 9001 and ISO 14001.

Dimensions



Constant Current Discharge Characteristics Unit:A (25 °C 77 °F)

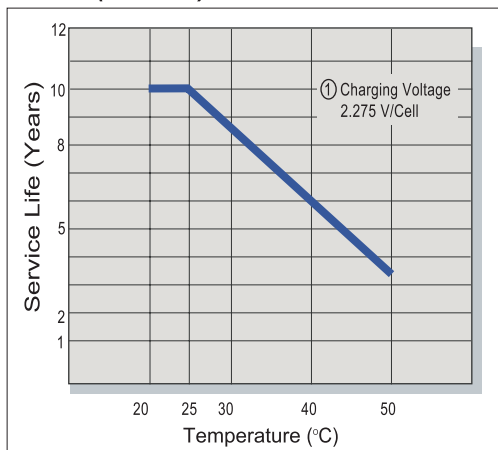
F.V/Time	5MIN	10MIN	15MIN	30MIN	1HR	2HR	3HR	4HR	5HR	8HR	10HR	20HR
1.60V	24.1	18.4	14.9	9.05	4.91	2.72	1.95	1.53	1.29	0.901	0.739	0.375
1.67V	23.2	17.7	14.4	8.85	4.74	2.63	1.89	1.50	1.26	0.879	0.729	0.369
1.70V	22.7	17.4	14.1	8.73	4.66	2.58	1.86	1.48	1.25	0.869	0.725	0.367
1.75V	21.8	16.8	13.6	8.50	4.55	2.49	1.80	1.45	1.22	0.849	0.709	0.360
1.80V	20.8	16.0	13.0	8.19	4.42	2.42	1.74	1.40	1.19	0.826	0.693	0.352
1.85V	19.6	15.1	12.3	7.87	4.30	2.34	1.69	1.36	1.15	0.800	0.668	0.345

Constant Power Discharge Characteristics Unit:W (25 °C ,77 °F)

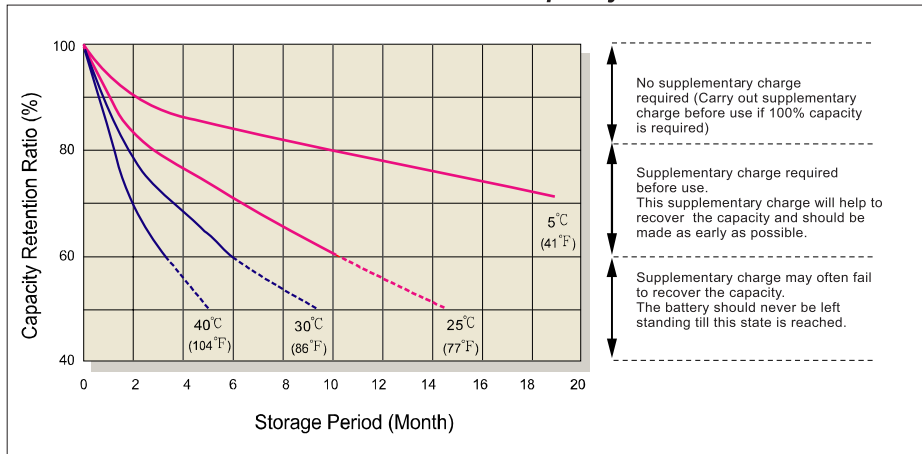
F.V/Time	5MIN	10MIN	15MIN	30MIN	1HR	2HR	3HR	4HR	5HR	8HR	10HR	20HR
1.60V	129	105	85.3	51.5	28.8	16.1	11.2	9.00	7.65	5.35	4.39	2.23
1.67V	125	102	82.5	50.3	28.1	15.8	11.0	8.86	7.52	5.25	4.31	2.20
1.70V	123	100	81.1	49.7	27.8	15.6	10.9	8.80	7.46	5.20	4.28	2.18
1.75V	120	96.5	78.8	48.6	27.4	15.2	10.8	8.67	7.33	5.13	4.22	2.14
1.80V	116	92.3	76.3	47.3	26.5	14.8	10.6	8.51	7.18	5.05	4.15	2.10
1.85V	111	88.3	73.8	46.1	25.8	14.3	10.4	8.36	7.03	4.98	4.07	2.06

• All mentioned values are average values.

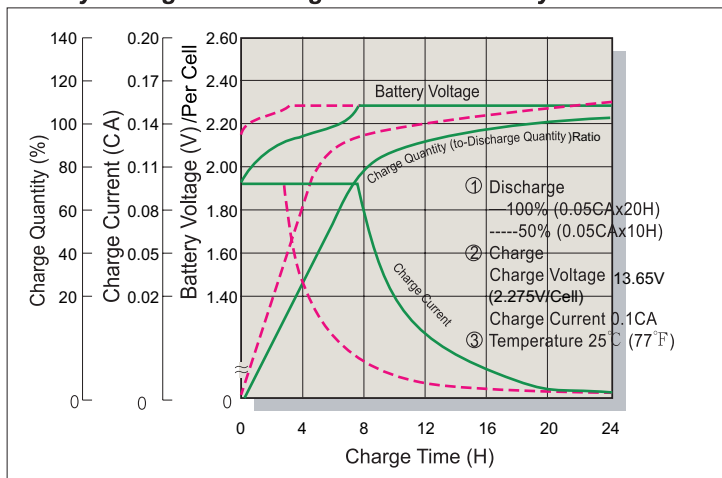
Trickle (or Float) Service Life



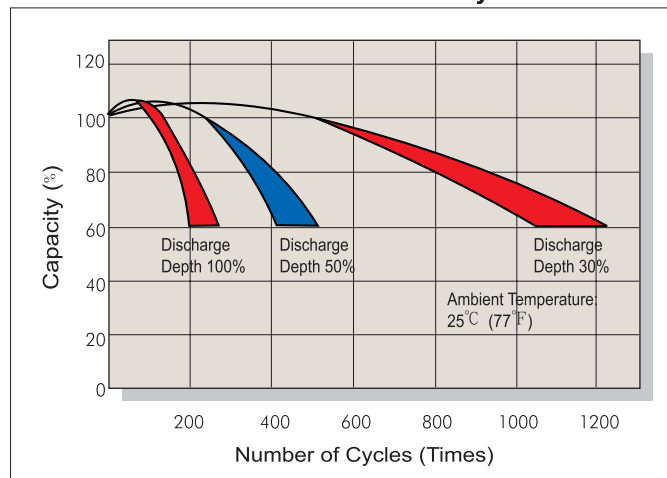
Capacity Retention Characteristic



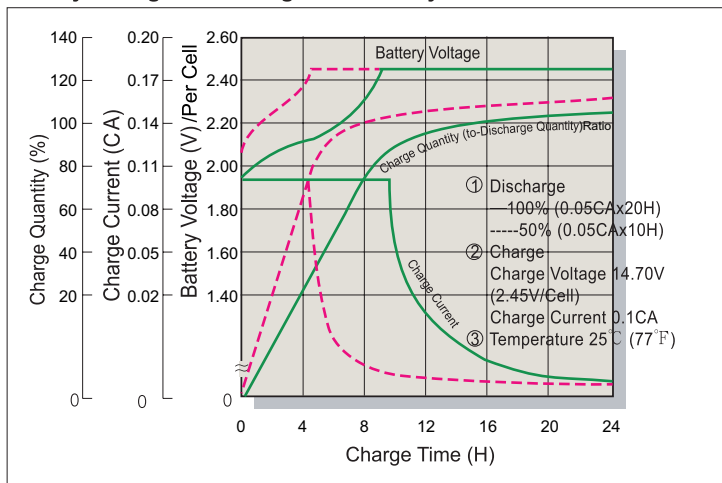
Battery Voltage and Charge Time for Standby Use



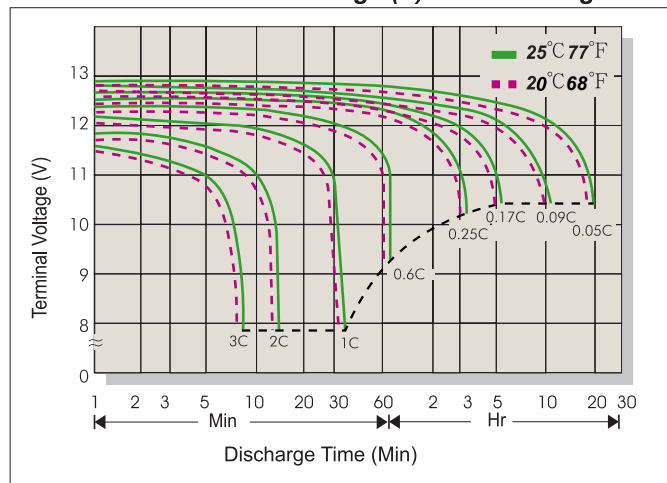
Cycle Service Life



Battery Voltage and Charge Time for Cycle Use



Terminal Voltage (V) and Discharge Time



Charging Procedures

Application	Charge Voltage(V/Cell)			Max.Charge Current
	Temperature	Set Point	Allowable Range	
Cycle Use	25°C (77°F)	2.45	2.40~2.50	0.3C
Standby	25°C (77°F)	2.275	2.25~2.30	

Discharge Current VS. Discharge Voltage

Final Discharge Voltage V/Cell	1.75	1.70	1.60	1.30
Discharge Current(A)	0.2C>(A)	0.2C<(A)<0.5C	0.5C<(A)<1.0C	(A)>1.0C

Sales Office URL: WWW.CSB-BATTERY.COM

CSB BATTERY CO., LTD.
TAIWAN OFFICE
Tel: +886-2-2555-5600
Fax: +886-2-2555-3300
E-mail: service@csb-battery.com.tw

CSB BATTERY TECHNOLOGIES (BEIJING) CO., LTD.
BEIJING OFFICE
Tel: +86-10-59621300/59621301/59621302/59621303
Fax: +86-10-59621304
mail: chinasls@csb-battery.com

CSB BATTERY TECHNOLOGIES, INC
USA OFFICE
Tel: +1-817-244-7777/1-8003 CSBUSA(272872)
Fax: +1-817-244-4445
E-mail: csb@csb-battery.com

CSB BATTERY LOGISTICS (SHANGHAI) CO., LTD.
SHANGHAI OFFICE
Tel: +86-21-5046-1622, 5046-0833
Fax: +86-21-5064-3314
E-mail: chinasls@csb-battery.com

CSB BATTERY OF NETHERLANDS B.V
NETHERLANDS OFFICE
Tel: +31(0) 180 418 140
Fax: +31(0) 180 418 327
E-mail: eurosales@csb-battery.com

CSB BATTERY LOGISTIC (SHANGHAI) CO., LTD.
SHENZHEN OFFICE
Tel: +86-755-8831-6488/6396/16356
Fax: +86-755-8831-6548
mail: she@csb-battery.com.cn