

**SPB636395 (Rechargeable Li-ion Polymer Battery )**

Date

2006.06.05

**To :** \_\_\_\_\_

## **SPECIFICATION OF PRODUCT**

**Rechargeable Li-ion Polymer Battery**  
**Model : SPB636395 (4500mAh)**

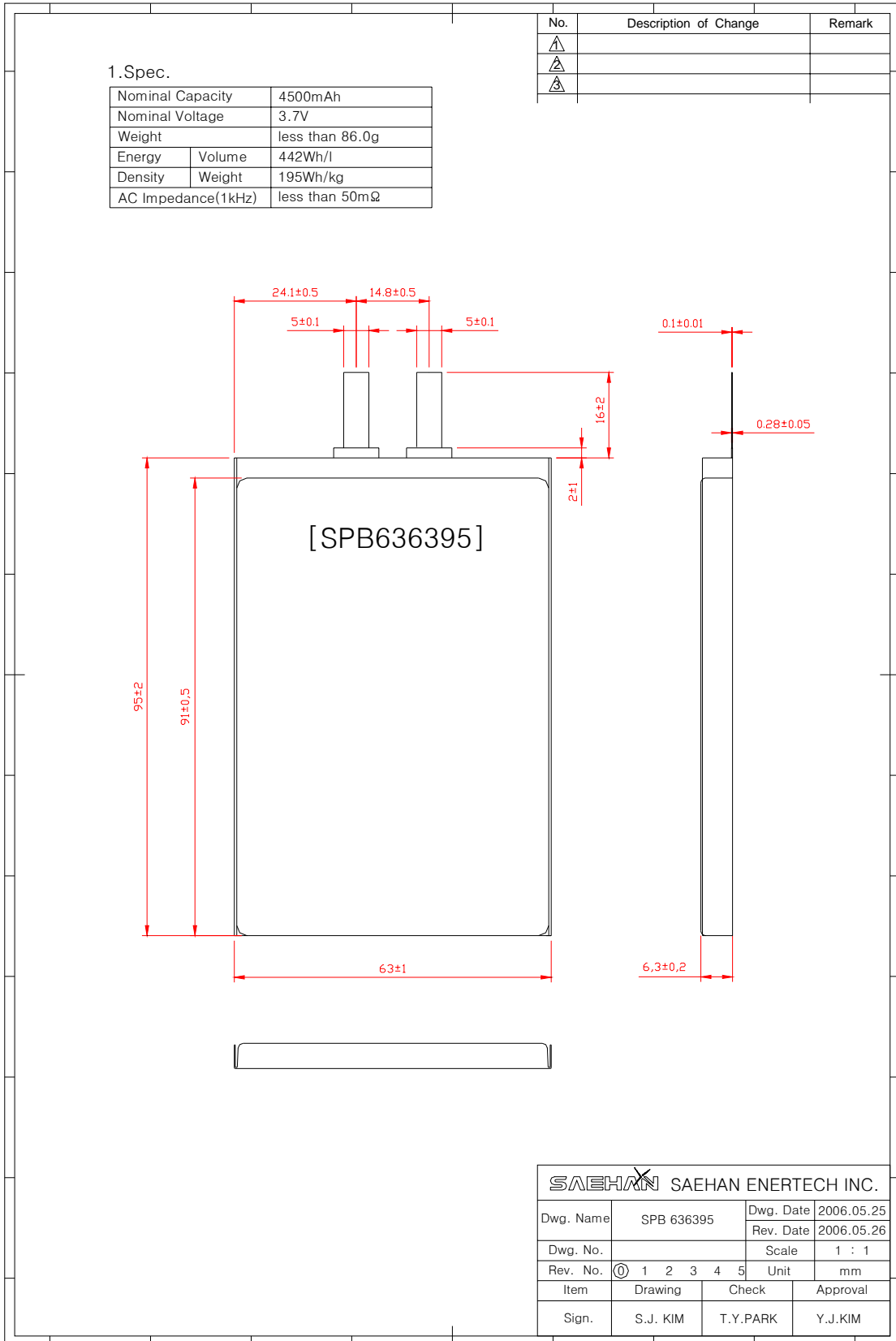
### **SAEHAN-ENERTECH. INC.**

710-3, Yongtan-Dong , Chung-Ju , Chung-buk , Korea  
TEL: 82-43-850-1950 FAX: 82-43-850-1999  
[www.saehan-enertech.com](http://www.saehan-enertech.com)

**1. Nominal Specifications**

	Item	Specification
1	Battery Type	Rechargeable Li-ion Polymer Battery
2	Model	SPB636395
3	Nominal Capacity	4500mAh (0.2C Discharge)
4	Nominal Voltage	3.7V
5	Energy Density	Volume 442 Wh/L
		Weight 195 Wh/kg
7	Charging Mode	CC-CV (constant voltage with limited current)
8	Charging Current	Standard : 2250mA (0.5C) Rapid : 4500mA (1.0C)
9	Charging Voltage	4.2V
10	Max. Charge Current	4500 mA
11	Discharge Current (Usage)	<b>2250 mA (0.5C)</b>
12	Cell Dimension (mm)	Thickness : 6.3 ± 0.2 mm Width : 63 ± 1.0 mm Height : 95 ± 2.0 mm
13	Cell Weight	86.0g or Less
14	AC Impedance (at 1kHz)	50mΩ or less
15	Operating Temperature	Charge : 0 to 45°C Discharge: -20 to 60°C
16	Storage Temperature	-10 ~ 40°C (Within 6 months)

**2. Out View drawing for SPB636395**



This drawing is property of SaeHAN EnerTECH Inc.. Use or copy of this drawing without proper permission from the appropriate technical-document managing department is prohibited.