

LO 29 SHX

3.0 V Primary lithium - sulfur dioxide (Li-SO₂) High Drain capability Spiral C-size cell



For high drain applications up to 2.5 A continuous, 6 A pulse currents, possibly combined with exposure to extreme temperatures.

Key features

- High and stable discharge voltage
- Performance not affected by cell orientation
- Low self discharge rate (*less than 3% after 1 year of storage at +20 °C*)
- Hermetic glass-to-metal sealing
- Built-in safety vent (at the negative end of the cell)
- Restricted for transport (class 9)
- UL Component Recognition (File Number MH 15076)
- Meets shock, vibration and other environmental requirements of military specifications
- Made in the USA

Main applications

- Radiocommunications and other military applications
- Rescue devices (PLBs, EPIRBs)

etc...

Cell size reference

R14 - C

Electrical characteristics

(typical values for cells stored for one year or less)

Nominal capacity	3.75 Ah
<i>(at 250 mA +20 °C 2.0 V cut off. The capacity restored by the cell varies according to current drain, temperature and cut off).</i>	
Open circuit voltage (at +20 °C)	3.0 V
Nominal voltage (at 0.4 A +20 °C)	2.8 V
Maximum recommended continuous current <i>(to avoid over-heating. Higher currents possible, consult Saft).</i>	2.5 A
<i>Pulse capability : Up to 6 A. Varies according to pulse characteristics (frequency, duration), temperature, cell history (storage conditions prior to usage) and the application's acceptable minimum voltage. Consult Saft.</i>	
Storage (recommended) <i>(possible without leakage)</i>	+30 °C/+86 °F max -60 °C (-76 °F) / +85 °C (+185 °F)
Operating temperature range	-60 °C (-76 °F) / +71 °C (+160 °F)

(Short excursions up to 85 °C possible at currents below 1 A).

Physical characteristics

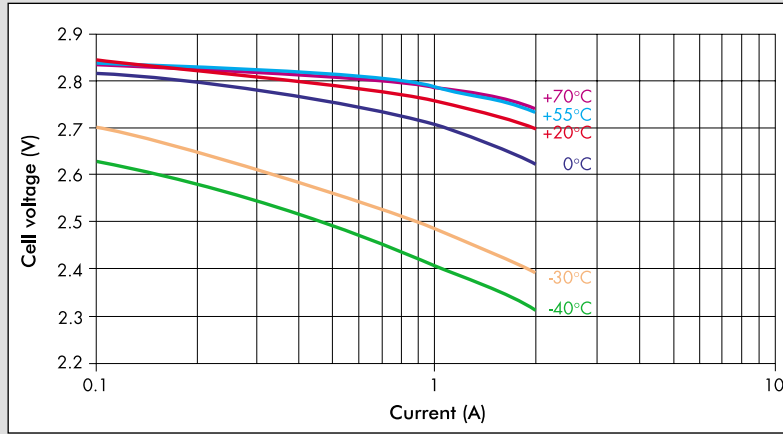
Diameter (max)	25.6 mm (1.00 in)
Height (max; finish without radial tabs)	50.4 mm (1.98 in)
Typical weight	40 g (1.4 oz)
Li metal content	1.2 g

Standard cell comes with resin potting in the topshell area and two radial 0.15 mm - thick nickel tabs

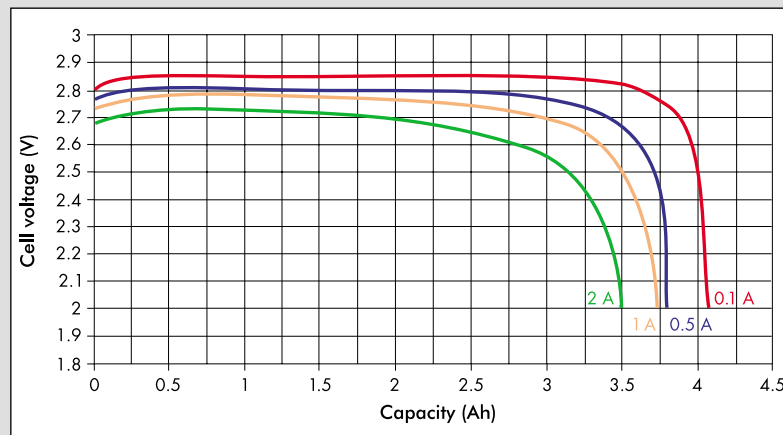
Finish with positive button on request

Finish with individual fuse on request

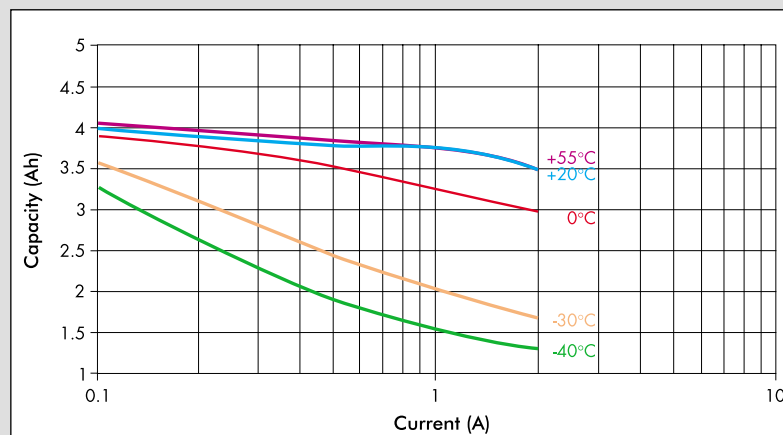
Voltage at mid-discharge versus Current and Temperature (2.0 V cut off)



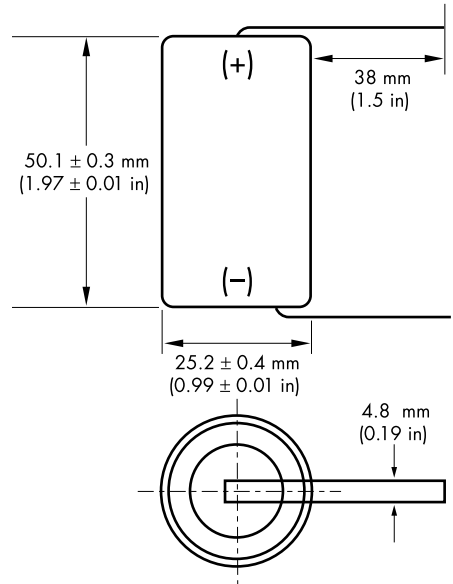
Typical discharge profiles at +20°C



Capacity versus Current and Temperature (Continuous discharges - 2.0 V cut off)



LO 29 SHX



Overall dimensions

Handling precautions

- Cell is pressurised.
- Do not puncture, open or mutilate.
- Do not obstruct the safety vent mechanism.
- Do not short circuit or charge.
- Do not expose to fire or temperatures above 70 °C (160 °F).



12, rue Sadi Carnot
 93170 Bagnolet - France
 Tel +33 1 49 93 17 25
 Fax +33 1 49 93 19 69

313, Crescent Street
 Valdese NC 28690 USA
 Tel +1 (828) 874 41 11
 Fax +1 (828) 879 39 81

Internet: <http://www.saftbatteries.com>

Doc. N° 31036-2-1102
 Published by the Communications Department

Information in this document is subject to change without notice and becomes contractual only after written confirmation by Saft.